

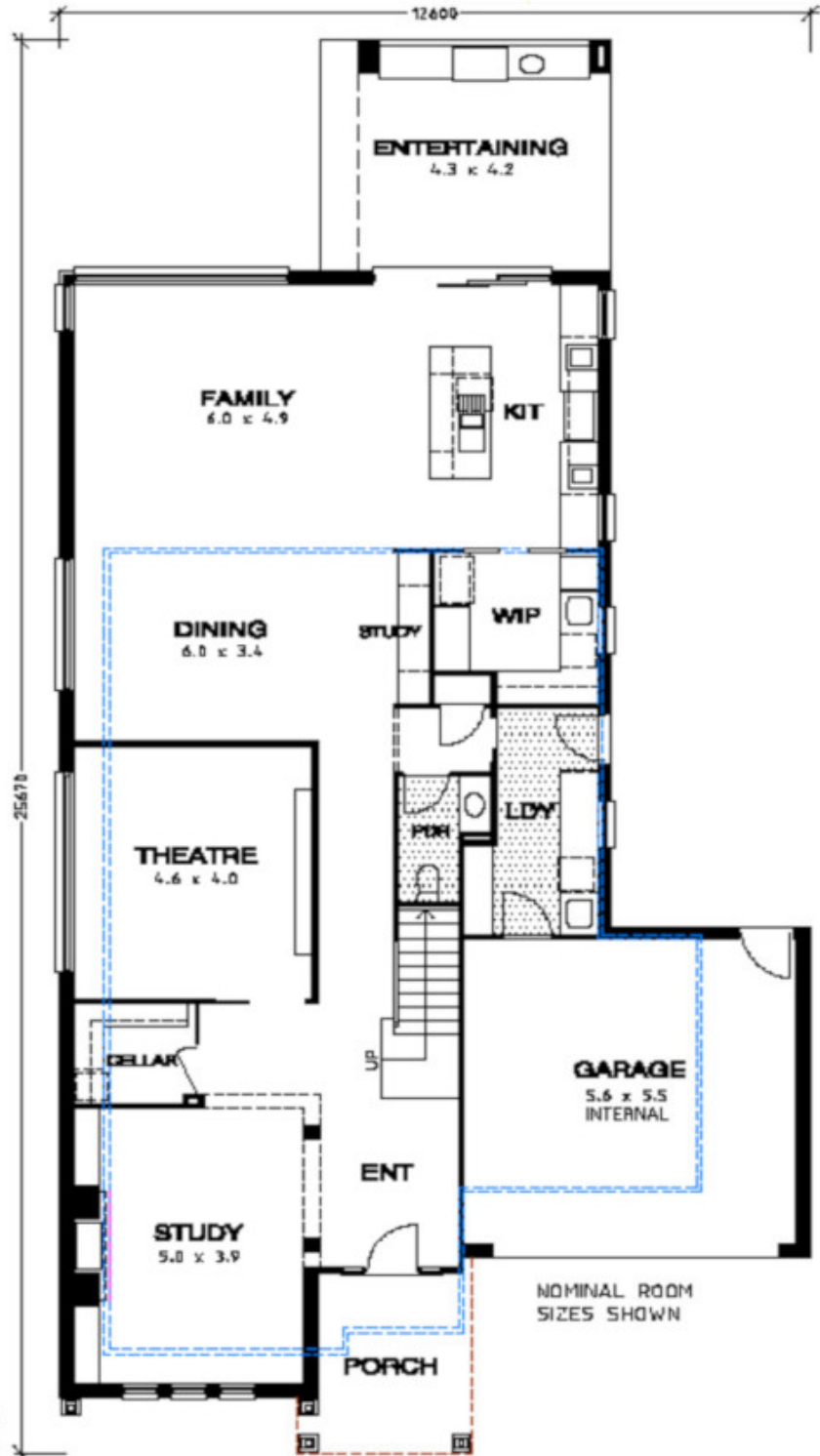
THE PALM BEACH 373

(middle)

AREA ANALYSIS

GROUND FLOOR	183.92m ²	- 17.88sq
UPPER FLOOR	122.47m ²	- 13.18sq
GARAGE	64.36m ²	- 3.70sq
PORCH	6.58m ²	- 0.98sq
ENTERTAINING	17.01m ²	- 1.88sq
TOTAL AREA	394.34m²	- 37.82sq

1 : 100
mirrored



lower plan

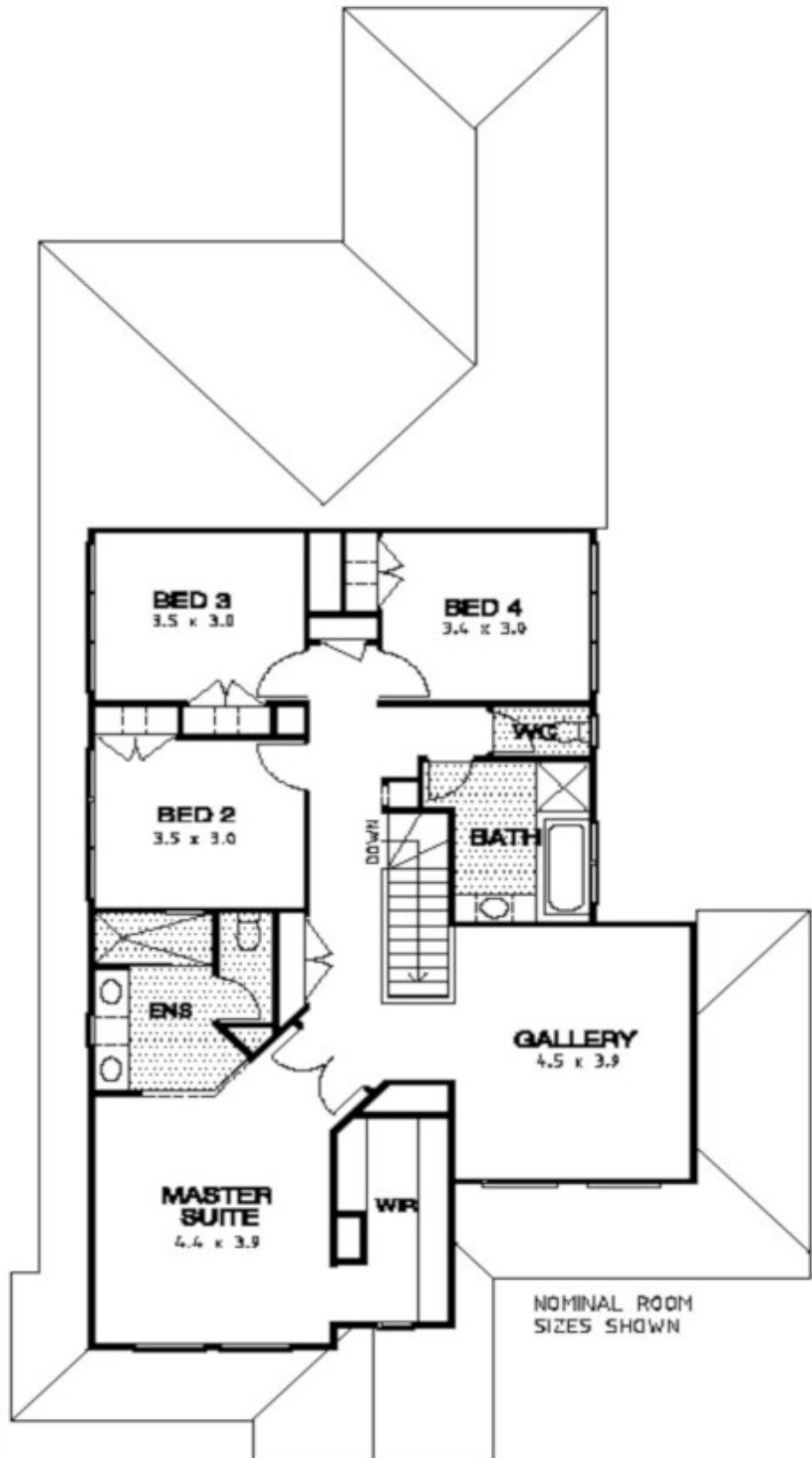
THE PALM BEACH 373

{midsize}

AREA ANALYSIS

GROUND FLOOR	183.89m ²	- 17.88sq
UPPER FLOOR	122.47m ²	- 13.18sq
GARAGE	64.36m ²	- 3.70sq
PORCH	6.58m ²	- 0.98sq
ENTERTAINING	17.01m ²	- 1.86sq
TOTAL AREA	288.64m²	- 37.58sq

1 : 100
mirrored



NOMINAL ROOM
SIZES SHOWN

upper plan