

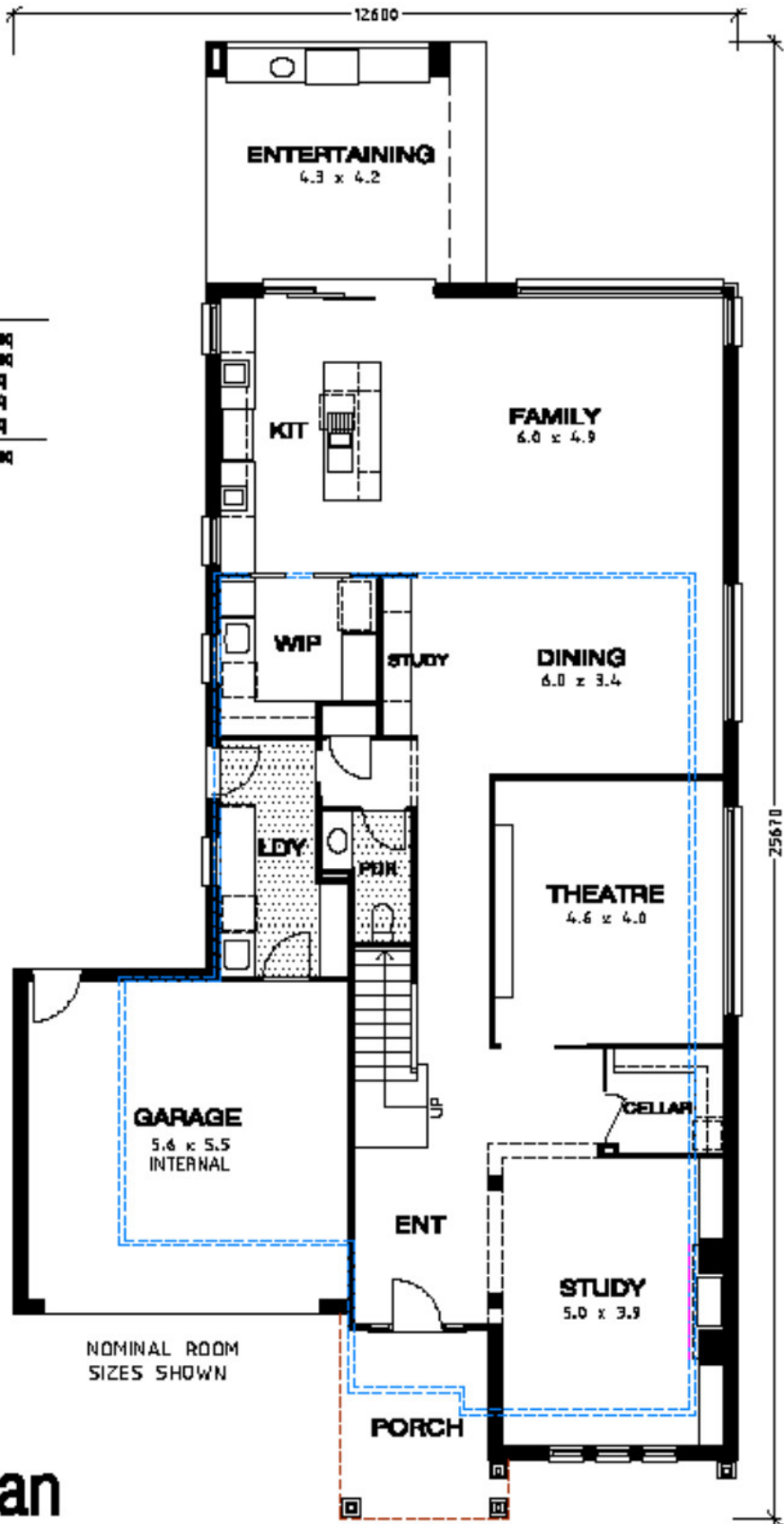
THE PALM BEACH 373

(middle)

AREA ANALYSIS

GROUND FLOOR	183.98m ²	- 17.88sq
UPPER FLOOR	122.47m ²	- 13.18sq
GARAGE	34.38m ²	- 3.70sq
PORCH	6.58m ²	- 0.98sq
ENTERTAINING	17.31m ²	- 1.88sq
TOTAL AREA	364.72m²	- 37.02sq

1 : 100



lower plan

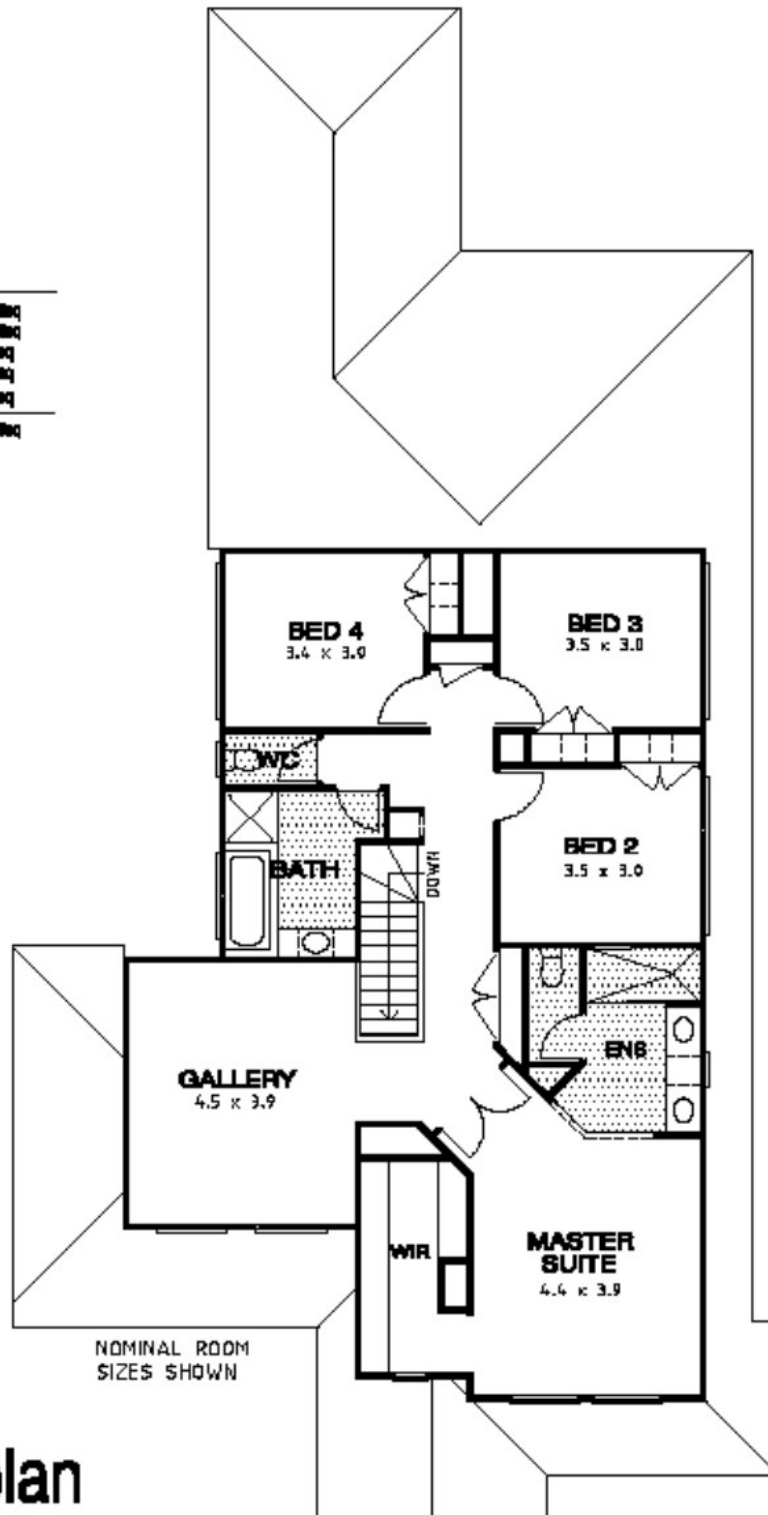
THE PALM BEACH 373

(medium)

AREA ANALYSIS

GROUND FLOOR	183.89m ²	- 17.88sq
UPPER FLOOR	182.47m ²	- 19.18sq
GARAGE	84.36m ²	- 9.70sq
PORCH	6.58m ²	- 0.96sq
ENTERTAINING	17.81m ²	- 1.88sq
TOTAL AREA	348.64m²	- 37.50sq

1 : 100



NOMINAL ROOM
SIZES SHOWN

upper plan